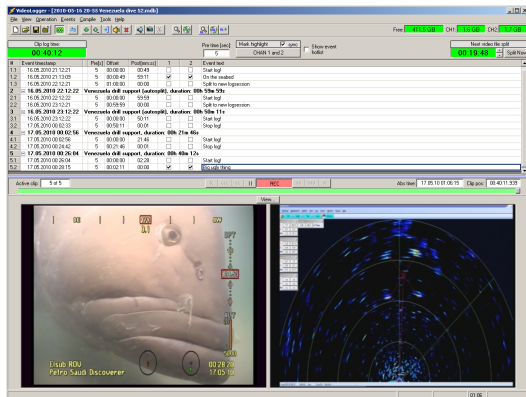


Integrated 1 to 4 channel video overlay and video recording system (PAL/NTSC video, WMV recording format)



Example: 2 channel configuration



Features:

- 1 to 4 channel Video logging PAL / NTSC to WMV format (Windows Media Video)
- 1 to 4 channel internal Video overlay on recorded video
- Optional: 1 to 4 channel external Video overlay, for distribution to operator and/or client
- Serial ports and network for flexible decoding of data from ROV and survey
- Put dynamic data from survey/ROV anywhere on overlay. Also logo insertion
- Live realtime video output with overlay. (also preview on PC, but with ca 1sec compression delay)
- Stillpicture snapshot during recording and during playback.
- Realtime mirror logging to client disk or e.g. Network storage.
- Video event log linked directly to video pictures. Video events are typed in by operator, or easy point&click operation from predefined list.
- Easy retrieval of video clips by double-clicking on video events. Video playback will then start off exactly at the position where event was linked to the video.
- Easy production of DVD movies based on selection of events, and timespan for each event. (IMPORTANT NOTE: VMW will need to be converted to MPEG2, this can be timeconsuming)
- Also function for Highlight-DVD based on start/stop flags set by operator during recording or playback. Burn highlight directly to DVD, or export the clips to a highlight archive project
- Video-DVD's will have DVD-menu with menu-text from related events recorded in VideoLogger.
- Removable harddrives for extended storage.

Input/outputs:



- Optional: 1-4 chan. of overlay with analog video in/out
- 1-4 channels of video input for VMW video logging + int overlay
- 1-4 channels of audio input for sound linked to the video pictures.
- 4 serial ports and 2 Ethernet ports for data-interfacing to survey/ROV/etc